



# Pedal Switch Kit



Models: T350, Speed Scrub 350

This kit includes the necessary parts to replace a defective pedal switch. Carefully install kit as instructed.

## INSTALLATION INSTRUCTIONS:

Installation Time: 1 hour

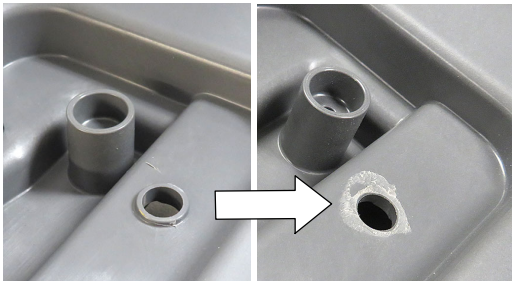
Special Tool Required: T25 torque screwdriver

9018095 - Kit Contents			
Ref	Part No.	Description	Qty.
1	1229309	Switch, Push, SPST, NO	1
2	1238693	Spacer, Switch, Pedal	1
3	1035711	Boot, Switch, Hex Nut, .38- 32 Thd	1

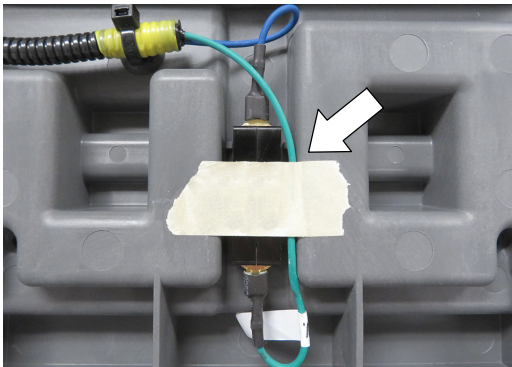
**FOR SAFETY:** Before servicing machine, stop on level surface, turn off machine, remove key and disconnect battery cables.

1. Remove the operator support deck from the machine as shown. Refer to the Service Information Manual for complete step-by-step removal instructions.
2. Install new push switch (1) as shown.

If machine was manufactured before serial numbers 10901027 and U00164, upgrade the machine by adding the switch boot (3) and spacer (2) to protect switch from damage. If replacing the propel pedal switch, carefully grind off the plastic boss flange before installing switch as shown.



If replacing the operator presence pedal switch, position the green wire as shown and secure it with tape to prevent wire damage.



3. After installing kit, test machine for proper operation.

